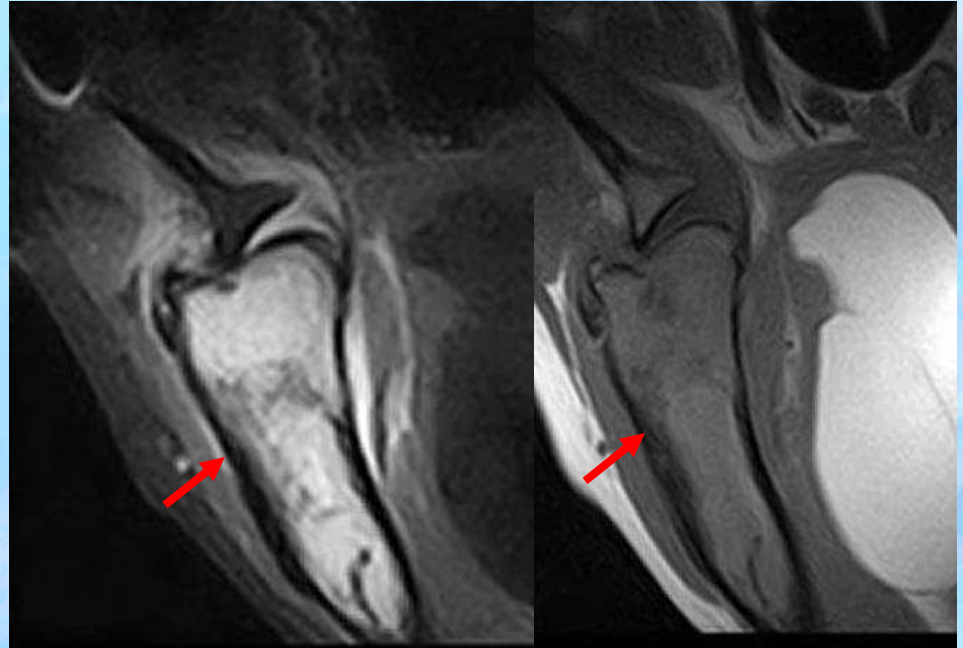
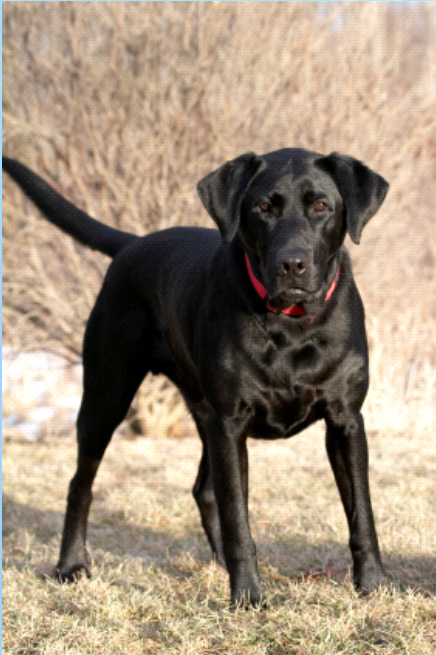




Proximal Humeral Bone Neoplasia



A black lab has been limping on his front left leg with episodes of pain for the past 6 weeks.

Findings:

- A mixed intensity in the proximal humeral medullary cavity on all sequences.
- On the STIR images, the signal intensity of this material remains hyperintense, suggesting that there is little marrow fat present.
- The soft tissue surrounding the proximal humeri, are hyperintense on STIR images as well, suggesting edema.
- The cranial humeral cortex is slightly indistinct and thin.. There is a large, lobulated fat intensity in the axilla.

Conclusion:

- Proximal Humeral Aggressive Lesion, Consider Primary Bone Neoplasia.
- Axillary Lipoma.

Dictated By:

Dr. Eric Greene DVM, DACVR (Ohio State University)



Advanced Animal Imaging

