

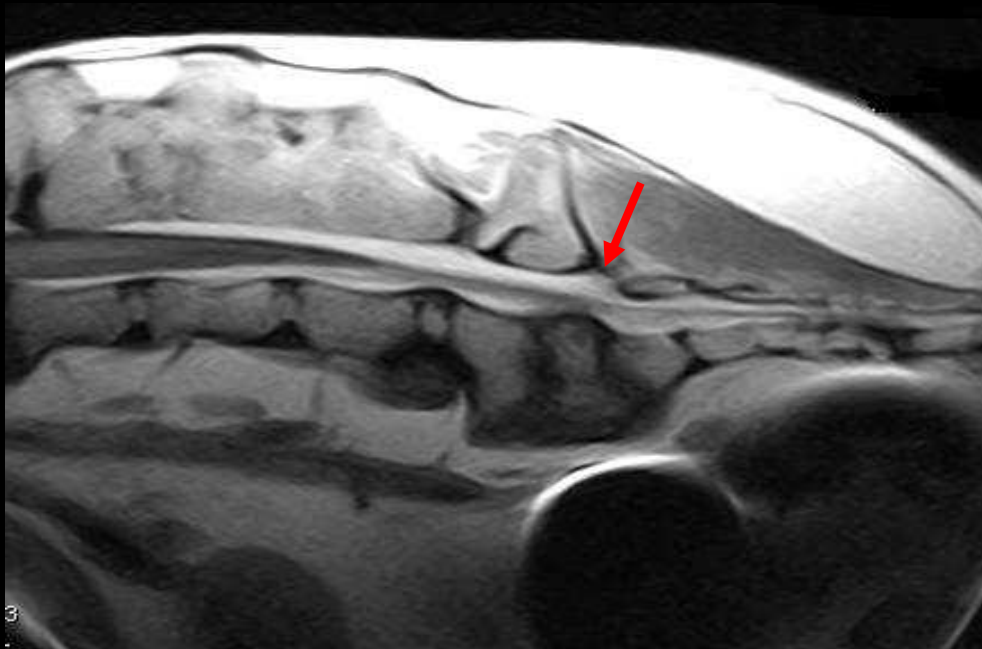


Disc Protrusion



Sarge English Bull Dog

Sarge was backed over in the drive way. He was non-weight bearing on his back legs and unable to stand or walk. A MRI was performed to look for the cause of rear leg paralysis.



Findings:

1. Intervertebral disc protrusion at L7-S1 on the left.
2. Multifocal spinal degenerative changes.
3. Midthoracic hemivertebra, common in this breed of dog.

